

Split Shaft Collars

Steel / Stainless Steel / Aluminum

SPECIFICATION

Version in Steel ST

Sintered (Distaloy AB)
Black oxidized with vapor
Socket cap screw DIN 912
Steel, plain

Version in Stainless Steel NI

Sintered AISI 316LHC
Socket cap screw DIN 912-A2

Version in Stainless Steel A4

Turned AISI 316
Weldable
Socket cap screw DIN 912-A4

Version in Aluminum AL

- Turned, tumbled
- Socket cap screw DIN 912-A2



INFORMATION

Split shaft collars GN 707.2 correspond in measurement to the semi-split shaft collars GN 706.2 (see page). They are used when an axial assembly is not possible. These shaft collars can safely and simply be assembled by reducing the slot height with high clamping force and thus they act, for instance, like an end stop. The surface of the shaft or the axle is not damaged.

For size $d_1 = 16$ to 36 , d_3 is a through hole; starting from $d_1 = 42$, d_3 is a threaded blind bore.

- List of Shaft Collar Types (see page)

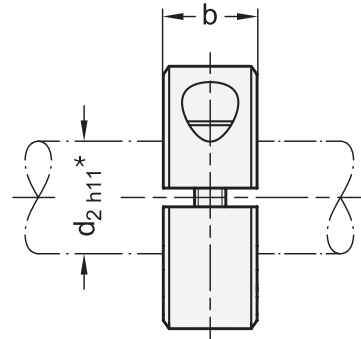
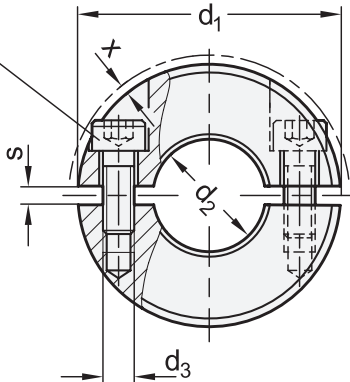
ACCESSORY

- Adjustable Hand Levers GN 311 (see page)
- Damping Washer GN 7072.30 (see page)

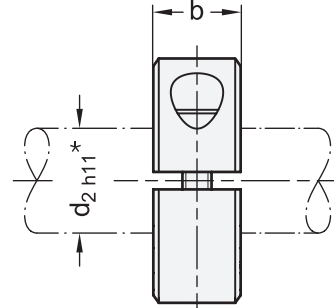
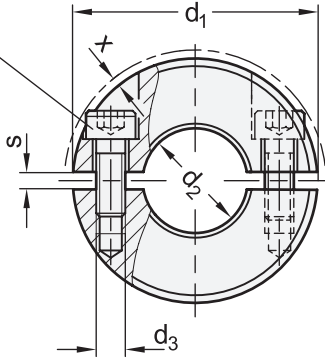
TECHNICAL INFORMATION

- ISO-Fundamental Tolerances (see page A21)
- Stainless Steel Characteristics (see page A26)

Socket cap screw
DIN 912



* recommended diameter tolerance

Socket cap screw
DIN 912* recommended
diameter tolerance

GN 707.2-ST

Description	d ₁	d ₂ H10	b ±0.2	d ₃	s	x ≈ Max. protrusion of cap screw	Adjustable hand lever for d ₃	⚖
GN 707.2-16-B4-ST	16	B 4	9	M 3	2.1	1.2	-	10
GN 707.2-16-B5-ST	16	B 5	9	M 3	2.1	1.2	-	11
GN 707.2-20-B6-ST	20	B 6	9	M 3	2.1	1.2	-	16
GN 707.2-22-B8-ST	22	B 8	9	M 3	2.1	1	-	18
GN 707.2-26-B10-ST	26	B 10	11	M 4	2.1	1.6	-	30
GN 707.2-30-B12-ST	30	B 12	11	M 4	2.1	0.7	311-30-M4-12-SW	39
GN 707.2-32-B14-ST	32	B 14	11	M 4	2.1	0.7	311-30-M4-12-SW	43
GN 707.2-36-B15-ST	36	B 15	13	M 5	2.1	1.4	311-30-M5-13-SW	60
GN 707.2-36-B16-ST	36	B 16	13	M 5	2.1	1.4	311-30-M5-13-SW	64
GN 707.2-42-B18-ST	42	B 18	15	M 5	3	0.6	311-30-M5-15-SW	104
GN 707.2-42-B20-ST	42	B 20	15	M 5	3	0.6	311-30-M5-15-SW	98
GN 707.2-48-B22-ST	48	B 22	15	M 5	3	0	311-45-M5-16-SW	134
GN 707.2-48-B25-ST	48	B 25	15	M 5	3	0	311-45-M5-16-SW	120
GN 707.2-55-B28-ST	55	B 28	15	M 6	3	0.5	311-45-M6-18-SW	165
GN 707.2-55-B30-ST	55	B 30	15	M 6	3	0.5	311-45-M6-18-SW	140
GN 707.2-60-B32-ST	60	B 32	15	M 6	4	0.4	311-45-M6-19-SW	187
GN 707.2-60-B35-ST	60	B 35	15	M 6	4	0.4	311-45-M6-19-SW	170
GN 707.2-65-B40-ST	65	B 40	15	M 6	4	0.5	311-45-M6-20-SW	189

GN 707.2-AL

Description	d ₁	d ₂ H10	b ±0.2	d ₃	s	x ≈ Max. protrusion of cap screw	Adjustable hand lever for d ₃	⚖
GN 707.2-20-B6-AL	20	B 6	9	M 3	2.1	1.2	-	8
GN 707.2-22-B8-AL	22	B 8	9	M 3	2.1	1	-	9
GN 707.2-26-B10-AL	26	B 10	11	M 4	2.1	1.6	-	14
GN 707.2-30-B12-AL	30	B 12	11	M 4	2.1	0.7	311-30-M4-12-SW	6
GN 707.2-32-B14-AL	32	B 14	11	M 4	2.1	0.7	311-30-M4-12-SW	20
GN 707.2-36-B15-AL	36	B 15	13	M 5	2.1	1.4	311-30-M5-13-SW	31
GN 707.2-36-B16-AL	36	B 16	13	M 5	2.1	1.4	311-30-M5-13-SW	30
GN 707.2-42-B18-AL	42	B 18	15	M 5	3	0.6	311-30-M5-15-SW	46
GN 707.2-42-B20-AL	42	B 20	15	M 5	3	0.6	311-30-M5-15-SW	43
GN 707.2-48-B22-AL	48	B 22	15	M 5	3	0	311-45-M5-16-SW	58
GN 707.2-48-B25-AL	48	B 25	15	M 5	3	0	311-45-M5-16-SW	54
GN 707.2-55-B28-AL	55	B 28	15	M 6	3	0.5	311-45-M6-18-SW	72
GN 707.2-55-B30-AL	55	B 30	15	M 6	3	0.5	311-45-M6-18-SW	70
GN 707.2-60-B32-AL	60	B 32	15	M 6	4	0.4	311-45-M6-19-SW	82
GN 707.2-60-B35-AL	60	B 35	15	M 6	4	0.4	311-45-M6-19-SW	76
GN 707.2-65-B40-AL	65	B 40	15	M 6	4	0.5	311-45-M6-20-SW	84





Machine elements

GN 707.2-NI

STAINLESS STEEL

Description	d ₁	d ₂ H10	b ±0.2	d ₃	s	x ≈ Max. protrusion of cap screw	Adjustable hand lever for d ₃	⚖️
GN 707.2-16-B4-NI	16	B 4	9	M 3	2.1	1.2	-	10
GN 707.2-16-B5-NI	16	B 5	9	M 3	2.1	1.2	-	11
GN 707.2-20-B6-NI	20	B 6	9	M 3	2.1	1.2	-	16
GN 707.2-22-B8-NI	22	B 8	9	M 3	2.1	1	-	18
GN 707.2-26-B10-NI	26	B 10	11	M 4	2.1	1.6	-	31
GN 707.2-30-B12-NI	30	B 12	11	M 4	2.1	0.7	311-30-M4-12-SW	38
GN 707.2-32-B14-NI	32	B 14	11	M 4	2.1	0.7	311-30-M4-12-SW	42
GN 707.2-36-B15-NI	36	B 15	13	M 5	2.1	1.4	311-30-M5-13-SW	69
GN 707.2-36-B16-NI	36	B 16	13	M 5	2.1	1.4	311-30-M5-13-SW	63
GN 707.2-42-B18-NI	42	B 18	15	M 5	3	0.6	311-30-M5-15-SW	105
GN 707.2-42-B20-NI	42	B 20	15	M 5	3	0.6	311-30-M5-15-SW	93
GN 707.2-48-B22-NI	48	B 22	15	M 5	3	0	311-45-M5-16-SW	138
GN 707.2-48-B25-NI	48	B 25	15	M 5	3	0	311-45-M5-16-SW	110
GN 707.2-55-B28-NI	55	B 28	15	M 6	3	0.4	311-45-M6-18-SW	165
GN 707.2-55-B30-NI	55	B 30	15	M 6	3	0.4	311-45-M6-18-SW	145
GN 707.2-60-B32-NI	60	B 32	15	M 6	4	0.4	311-45-M6-19-SW	188
GN 707.2-60-B35-NI	60	B 35	15	M 6	4	0.4	311-45-M6-19-SW	150
GN 707.2-65-B40-NI	65	B 40	15	M 6	4	0.5	311-45-M6-20-SW	180

GN 707.2-A4

STAINLESS STEEL

Description	d ₁	d ₂ E8	b ±0.2	d ₃	s	x ≈ Max. protrusion of cap screw	Adjustable hand lever for d ₃	⚖️
GN 707.2-20-B6-A4	20	B 6	9	M 3	1.6	1.2	-	18
GN 707.2-22-B8-A4	22	B 8	9	M 3	1.6	1	-	21
GN 707.2-26-B10-A4	26	B 10	11	M 4	1.6	1.6	-	35
GN 707.2-30-B12-A4	30	B 12	11	M 4	1.6	0.7	311-30-M4-12-SW	45
GN 707.2-32-B14-A4	32	B 14	11	M 4	1.6	0.7	311-30-M4-12-SW	50
GN 707.2-36-B15-A4	36	B 15	13	M 5	1.6	1.4	311-30-M5-13-SW	76
GN 707.2-36-B16-A4	36	B 16	13	M 5	1.6	1.4	311-30-M5-13-SW	75
GN 707.2-42-B18-A4	42	B 18	15	M 5	1.6	0.6	311-30-M5-15-SW	120
GN 707.2-42-B20-A4	42	B 20	15	M 5	1.6	0.6	311-30-M5-15-SW	110
GN 707.2-48-B22-A4	48	B 22	15	M 5	1.6	0	311-45-M5-16-SW	153
GN 707.2-48-B25-A4	48	B 25	15	M 5	1.6	0	311-45-M5-16-SW	138
GN 707.2-55-B28-A4	55	B 28	15	M 6	1.6	0.4	311-45-M6-18-SW	185
GN 707.2-55-B30-A4	55	B 30	15	M 6	1.6	0.4	311-45-M6-18-SW	170
GN 707.2-60-B32-A4	60	B 32	15	M 6	1.6	0.4	311-45-M6-19-SW	220
GN 707.2-60-B35-A4	60	B 35	15	M 6	1.6	0.4	311-45-M6-19-SW	180
GN 707.2-65-B40-A4	65	B 40	15	M 6	1.6	0.5	311-45-M6-20-SW	225